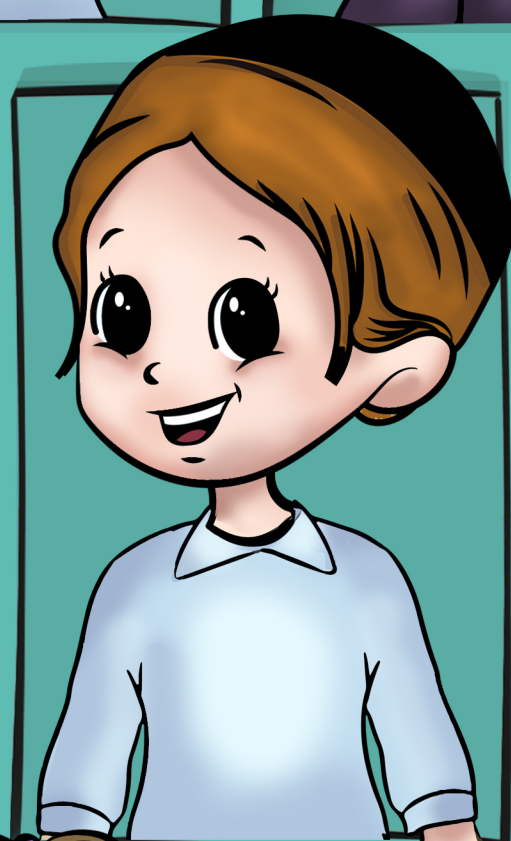
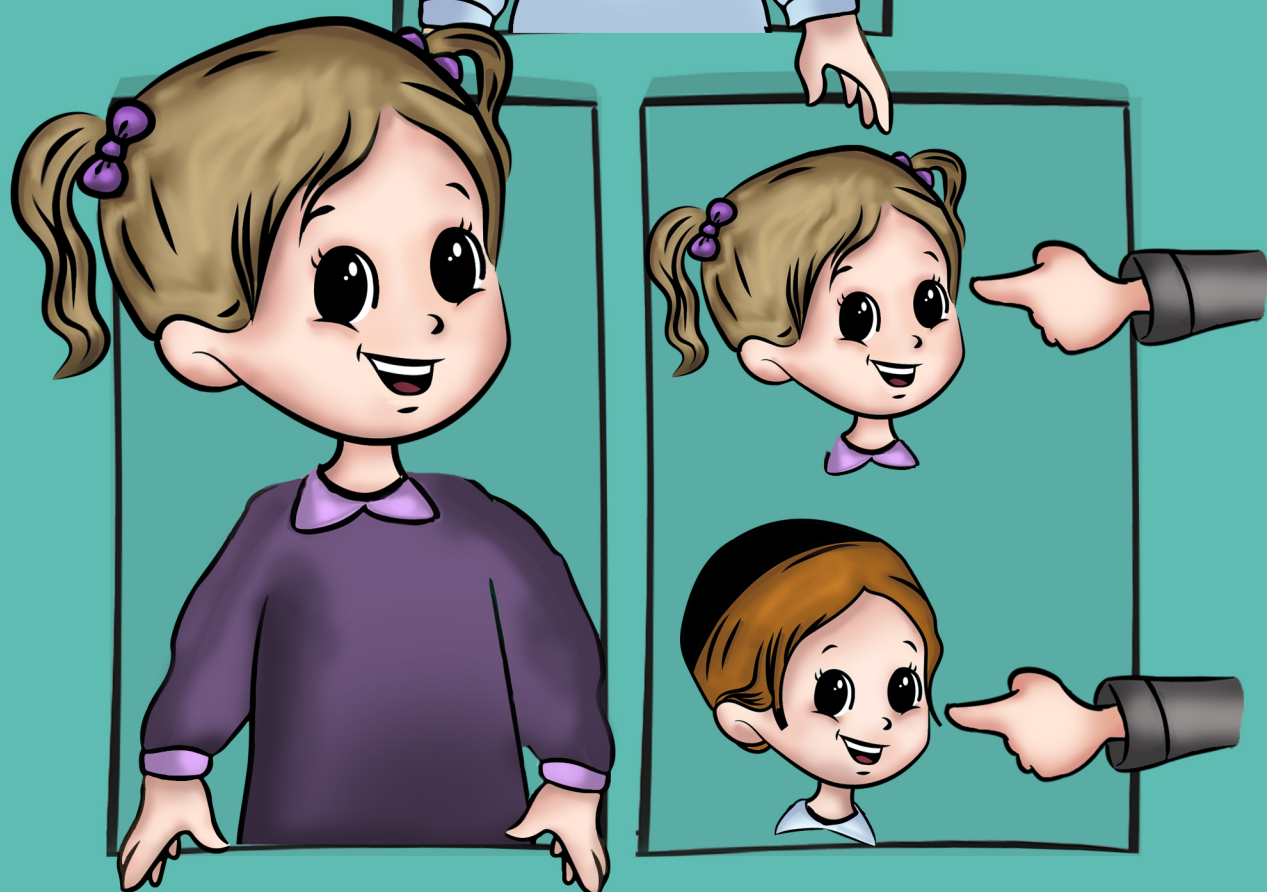


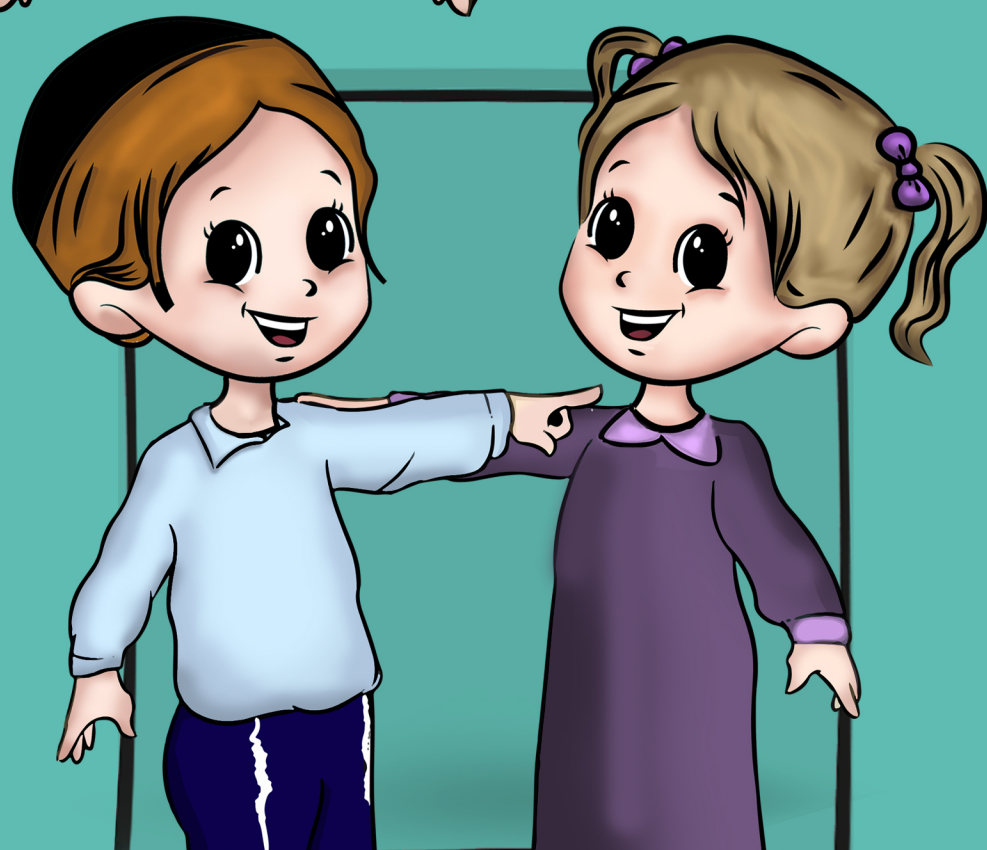
I will

A large, bold black Hebrew letter Aleph (א) is centered on a yellow rectangular background that has a folded bottom-right corner.

he will

A large, bold black Hebrew letter He (ה) is centered on a yellow rectangular background that has a folded bottom-left corner.

you will/ she will

A large, bold black Hebrew letter Tet (ת) is centered on a yellow rectangular background.

we will

A large, bold black Hebrew letter Vav (ו) is centered on a yellow rectangular background that has a folded bottom-right corner.